

Get to know

Lucile Packard Children's Hospital Stanford

Our hospital began with one mom's vision. Lucile Salter Packard, our generous founder and visionary for children's health, believed strongly in caring for both the body and soul of every child. That commitment to nurturing care continues to guide us today.

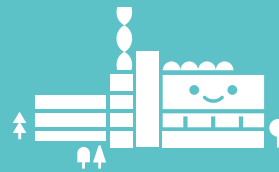


43%

of patients and families at Lucile Packard Children's Hospital Stanford receive financial assistance, thanks to community support.

Our network provides care for more than **667,000** patient visits a year.

Our hospital expansion opened in 2017, adding 521,000 sq. ft. of building space, 149 patient beds, and 6 new surgical suites.



No family in our community is ever turned away due to their financial circumstances.

Our Bass Center for Childhood Cancer and Blood Diseases offers **120+** clinical trials.



Our Betty Irene Moore Children's Heart Center performs **700+** open heart surgeries each year.

100% of gifts donated to the hospital benefit patients and families in our care.

In 2023, more than **43,000 patients** received a visit from a child life specialist.



Our Stanford Medicine Children's Health network offers care at 65 Bay Area locations.

In 2023, our patients came from **50 states in the U.S., and 44 countries** around the world.



Last year, our Johnson Pregnancy and Newborn Center delivered **4,639 babies.**